



Benefits of Being an AAPC Local Chapter Officer

Agenda

- ▶ Why Serve
- ▶ Qualifications of an Officer
- ▶ Benefits of Being a Local Chapter Officer
- ▶ Officer Roles
- ▶ Benefits of HEALTHCON



AAPC Mission Statement

Our mission is to advance the business of healthcare by providing professional training, industry-standard certifications, and comprehensive solutions to individuals and organizations across medical coding, billing, auditing, compliance, and practice management.

Support the national and local membership by providing educational products and opportunities to network.

Increase and promote national recognition and awareness of healthcare business professionals.

Why serve?

Career Advancement Skills

Development of Leadership

Team Building Experiences

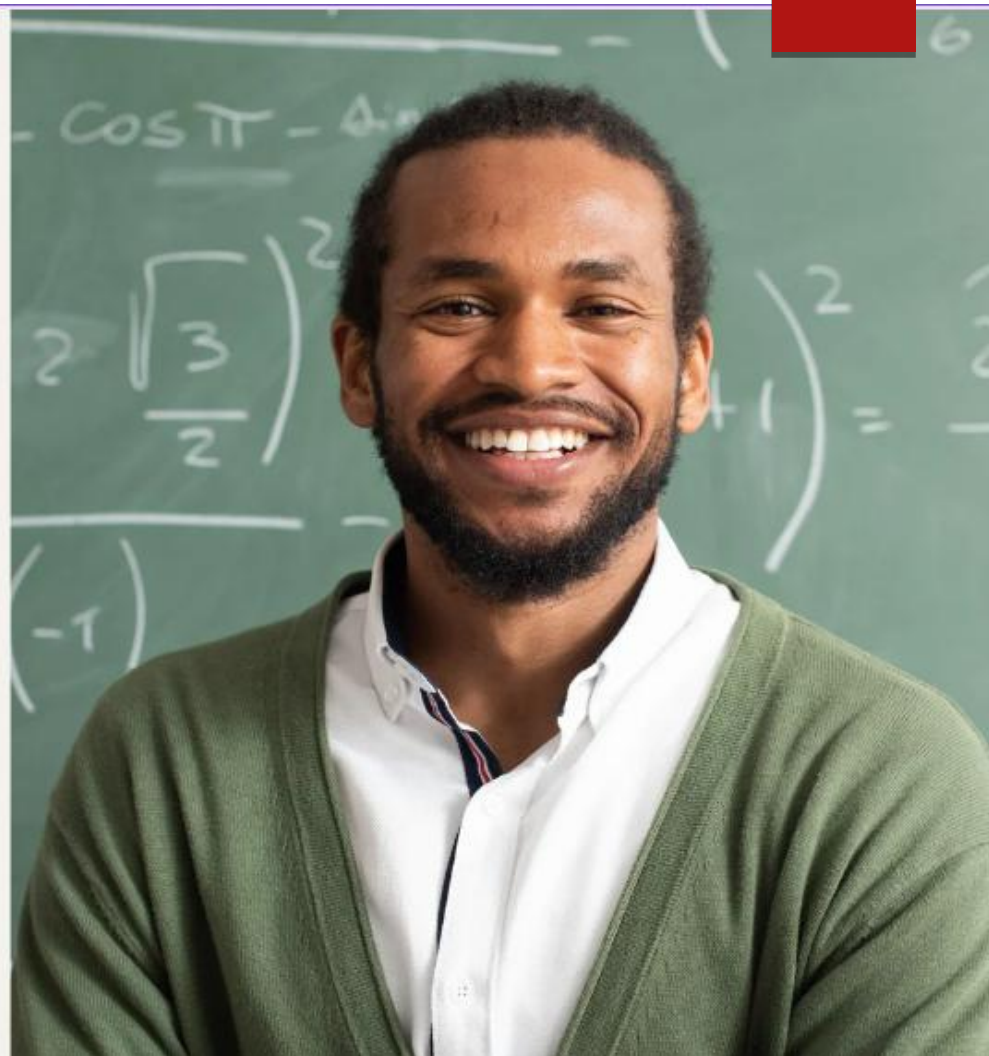
It looks great on a resume



Mastering New Skills

Volunteering: The greatest gift of all.

SELF-ESTEEM



Chapter officers come in all shapes and sizes

Some have
previous
experience

Some are brand
new to the field
but willing to step
up and help out

Qualifications

Qualifications

No Experience Necessary

Able to commit to 2-3 hours a month

Team player

Willing to ask questions



VOLUNTEER *Power*

The Satisfaction of knowing you
are doing your part
to keep your Local Chapter open

:- BENEFITS OF VOLUNTEERING :-



Friendship

- ▶ Investment of 2-3 hours a month creates a lifetime of friendship, professional development and an awesome sense of purpose



Rewarding
feeling of
mentoring

Communication skill development

- ▶ Officer planning meetings
- ▶ Chapter meetings
- ▶ Clear roles and responsibilities
- ▶ Knowing limitations; asking for help
- ▶ Team building
- ▶ Interpersonal support

Team building opportunities



Satisfaction of a job well done





Shared experience

"Networking, tons of CEU opportunities, learning skills, like booking speakers, public speaking, mentoring members, proctoring exams. For every interview...I mean EVERY...it has been brought up, discussed, and probably put me over the edge in choosing new staff."

"Oh, learning Zoom, gotomeeting and Teams platforms. Learning how to put PowerPoint slide decks together."



Sarah Ragan, COC, CPC, CPMA, CRC, CFPC
Vice-President, Daytona Beach, Florida

Let's talk
chapter
officers

Officer Requirements

Member of AAPC

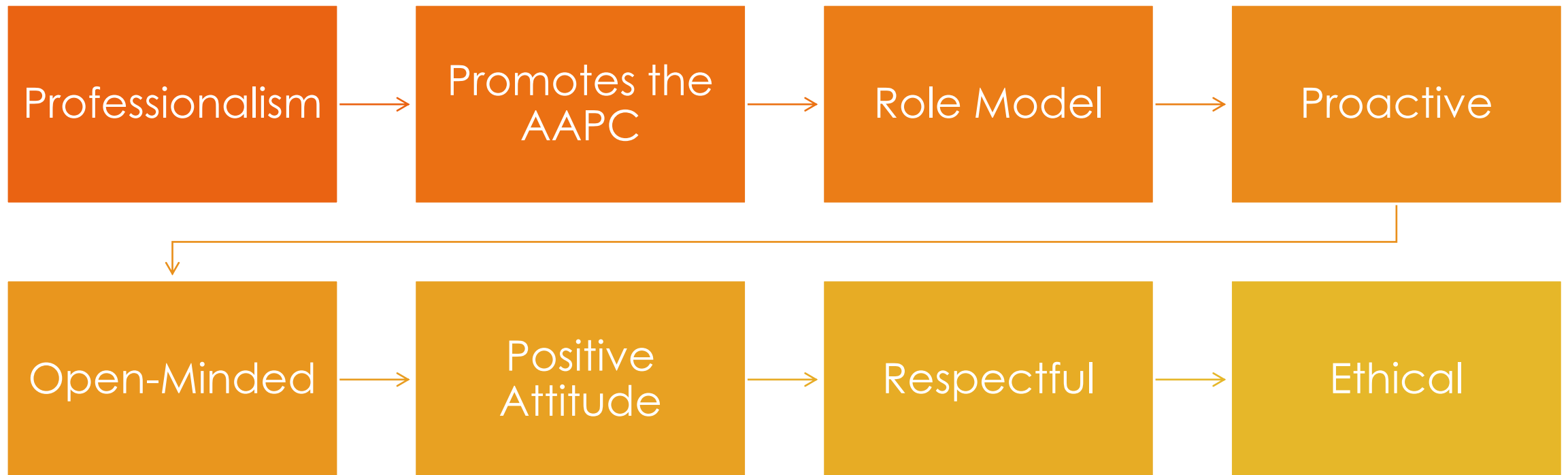
President, VP, and Educational Officer Must Hold an AAPC Credential

Member of the Chapter

Be in Attendance

Communicate Timely

Qualities of a Great Officer



Officers

President

Vice-President

Education Officer

Secretary

Treasurer

Member Development Officer

President

Vice President

Secretary

Treasurer

Education
officer

Member
development
officer

Officers

President

Vice-President

Education Officer

Secretary

Treasurer

Member Development Officer

Resources for Officers

Staff at AAPC – 800-626-2633

- ▶ localchapters@aapc.com
- ▶ localchaptersceus@aapc.com
- ▶ AAPCCA CAB - Chapter Advisory Board
- ▶ NAB National Advisory Board
- ❖ *Both listed online*

*HOW WILL IT BENEFIT
ME?*

HEALTHCON

Nationals/Regionals

Talk To Your Employer

- ▶ DO NOT BE AFRAID TO ASK!!
- ▶ Explain the benefits to your boss!
- ▶ There are an abundance of sessions to choose from. CEUs are available. Over 2500 professionals to network with




Reasons To Attend

- ▶ Learn best practices from leading experts, thought leaders, and organizations
- ▶ Return with notes on how you can incorporate this newfound knowledge into your current position

A stack of books is visible on the right side of the image, partially obscured by a semi-transparent red overlay. The books have various colored spines, including shades of red, orange, and purple. The text is written in white, sans-serif font over the red overlay.

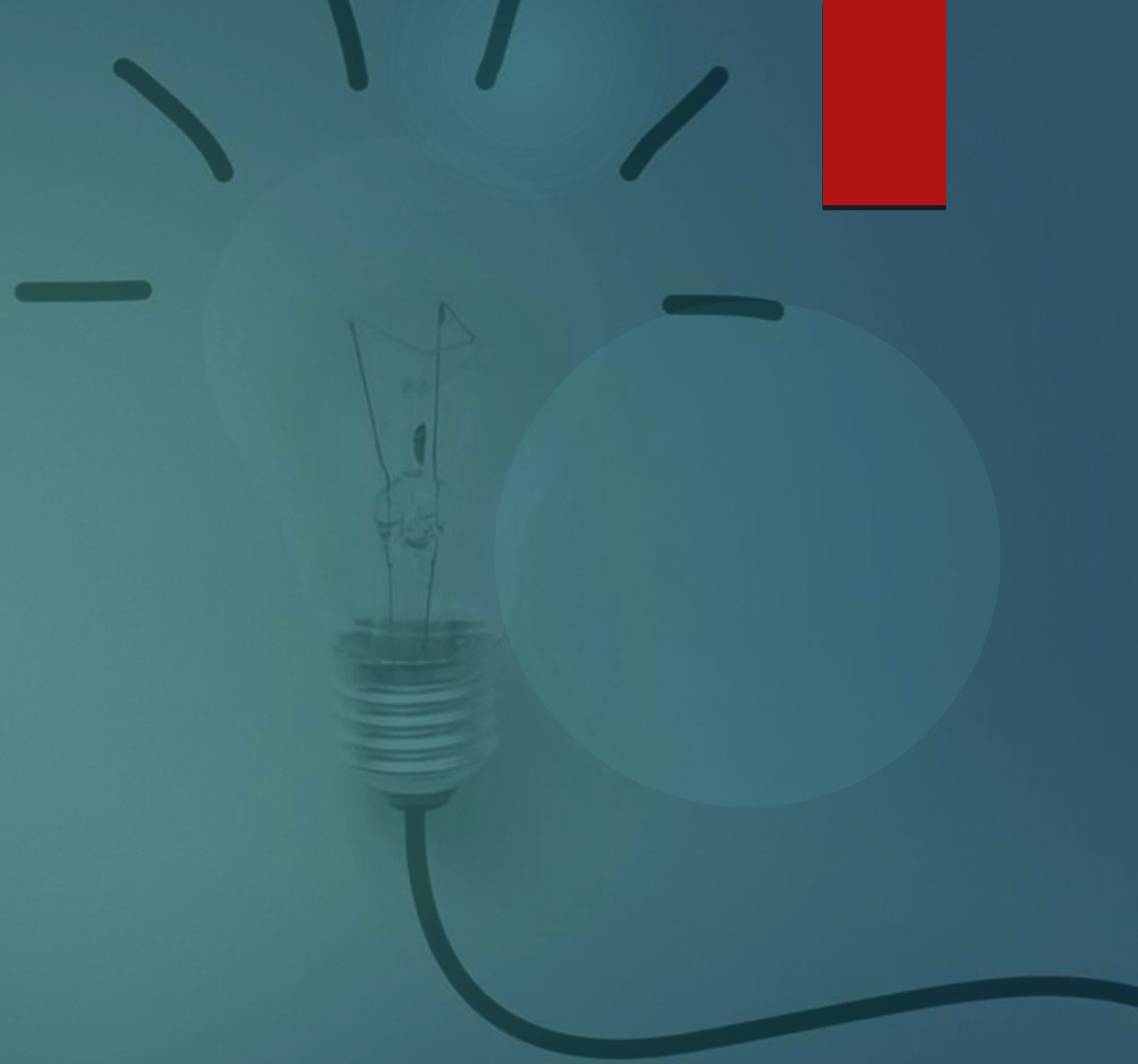
The knowledge and know how
you come back with are
designed to help facilities and
organizations effectively
maximize and secure revenue

WHAT TO
EXPECT!

The background of the image is a solid reddish-pink color. Overlaid on this is a network diagram. It consists of numerous small, stylized human figures in a light beige color. Each figure is positioned at a node of a network, which is represented by a thin, dark line. These lines connect the figures to one another, creating a complex web of relationships. The figures are scattered across the frame, with some appearing more isolated and others more centrally located within the network. The overall effect is one of a large, interconnected community.

Connections!
&
New Friends!

Learning!



Dallas 2026

Dallas, TX | May 3-6| Hybrid Event
80+ sessions | 65+ speakers | 18+ CEUs available |
Unlimited fun



We'll see you next year in Orlando!



Questions

